
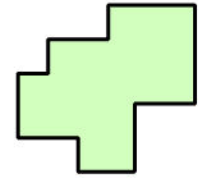
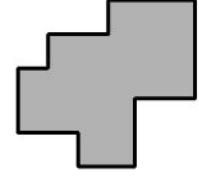
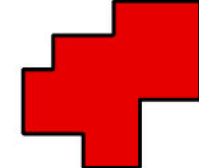


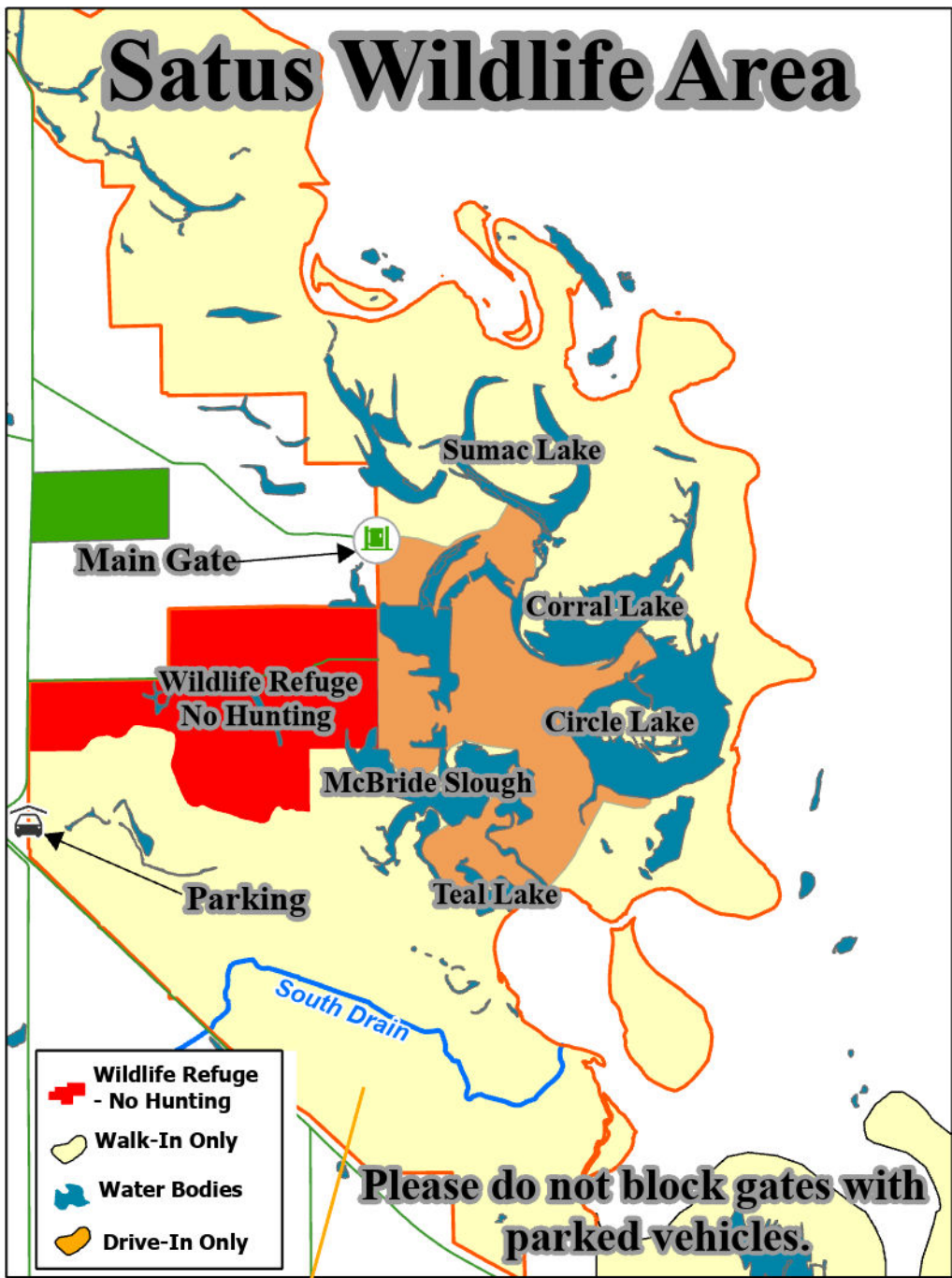
- 

Areas posted "Feel Free to Hunt."
- 

Areas open to hunting on Wednesdays, weekends, & Holidays.
- 

Non-trust lands (Private Lands)
- 

Refuge areas, homesites, etc. Closed to hunting.



2025- 2026 HUNTING DAYS
SATUS WILDLIFE RECREATION AREA
(SWRA)
All Saturdays, Sundays and Wednesdays:
October 11, 2025 - January 25, 2026
These Holidays:
November 11, 27 & 28, 2025
Dec 24, 25, 31 2025
Jan 1 & 19 and everyday Jan 20-25, 2026
*Open for dove and early goose seasons by walk-in access only
The SWRA is located on Satus Longhouse Road approximately 13 miles southeast of Toppenish on Highway 22
NO OVERNIGHT CAMPING ALLOWED
ABSOLUTELY NO ALCOHOL ALLOWED
NON-TOXIC SHOT REQUIRED FOR ANY WATERFOWL

EXTENDED QUAIL SEASON ** January 1-19, 2026

East of Highway 97 from Union Gap to the junction of Highway 22 and East of Highway 97 and Highway 22 to Mabton.

Daily bag limit is 5

QUAIL HUNTERS*

Park your vehicle away from duck and goose hunting areas. Parked vehicles affect the success of decoy sets.

YOUTH PUBLIC HUNTING September 13 & 14, 2025

Valid Yakama Nation hunting & fishing permit

required for hunters 13-17 years of age. Youth hunters 12 and under must be accompanied by an adult

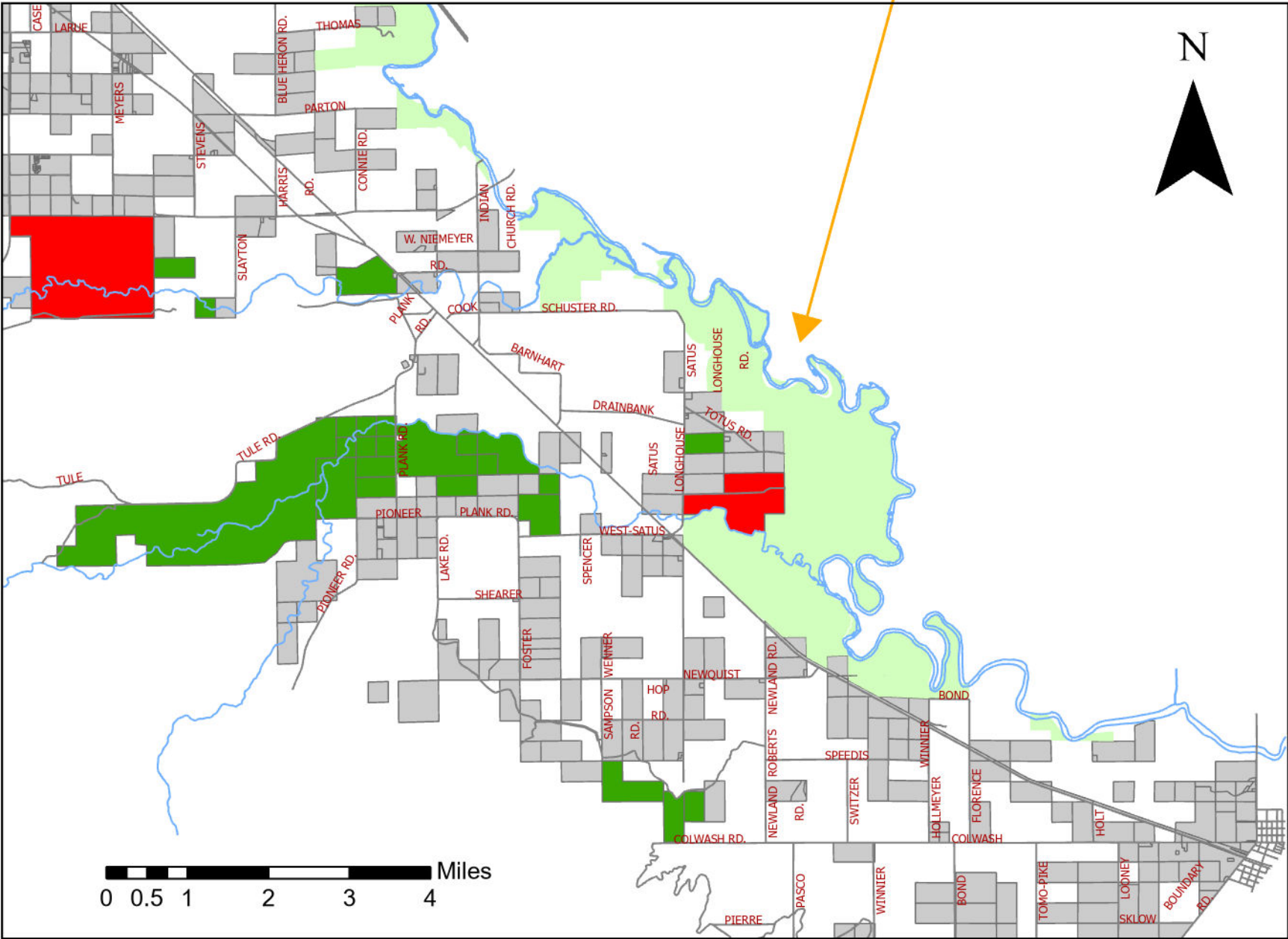
with a valid Yakama Nation hunting and fishing permit.

1) Zimmerman's***
2) Hambridge***
3) Lateral C ***
Public hunting allowed only on Wednesdays and Sundays***
Public hunting access by reservation only
Contact the YNWRP
For reservations call Monday morning at 9:00 a.m. the week prior to requested date. Call Sandra Celestine at (509) 865-5121 Ext. 6307

CARL PROPERTY (Pumphouse road)

Available for reservation on Wednesdays, Saturdays and Sundays. Contact Yakama Nation Wildlife Resource Management Program (YNWRP) for reservations **(509) 865-5121 X6307**

Harlequin Duck harvest closed on the Yakama Nation Reservation and Statewide



2025-26 PUBLIC HUNTING SEASONS & LIMITS		
Species	Daily bag Limit	Season
Mourning Dove	15	September 01 - 30, 2025
Cock Pheasant	3	October 11 - December 31, 2025
California Quail ** & Gray Partridge	10	October 11 - December 31, 2025
Extended Quail season	5	January 01 - 19, 2026
Chukar	3	October 11 - January 25, 2026
Early Canada geese season	5	September 6-7, 2025
Duck	7	October 11-19 & October 22 - January 25, 2026
Geese includes : Canada Goose	3	October 11-27 & November 1 - January 25, 2026
White-fronted goose & White Goose	10	October 11-19 & October 22 - January 25, 2026
American Coot	25	October 11-19 & October 22 - January 25, 2026
Snipe	8	October 11-20 & October 23 - January 25, 2026
Scaup (season closed October 11-31, 2025)	2	November 01 - January 25, 2026
Rabbit (Cottontail only)	5	September 01 - January 25, 2026

Swan harvest is closed on Yakama Nation Reservation & statewide

Daily (7) duck bag count species restrictions:

- 2 hen mallards
- 3 Pintail
- 2 Redheads
- 2 Canvasback
- 3 Goldeneye
- 2 Scaup (closed Oct 11-31 2025)

Other species may include in any combination up to daily bag limit of 7

- Green-winged Teal
- Blue-winged Teal
- Cinnamon Teal
- American Widgeon
- Ring-necked Duck
- Gadwall
- Northern Shoveler
- Bufflehead
- Wood Duck
- Ruddy Duck
- Common Goldeneye
- Eurasian Widgeon
- Hooded Merganser
- Common Merganser



YAKAMA NATION WILDLIFE RESOURCE MANAGEMENT

PUBLIC HUNTING SEASON 2025-2026					
www.ynwildlife.org					
"FEEL FREE TO HUNT" MAP AND PUBLIC HUNTING RULES AND REGULATIONS					
UPLAND GAMEBIRD, WATERFOWL, AND SMALL GAME ONLY					
2025 - 2026 HUNTING HOURS					
Daylight Savings Time			Pacific Standard Time		
DATE	A.M.	P.M.	DATE	A.M.	P.M.
Mon September 1 - 7	5:45	7:30	Sun. November 2	6:15	4:45
Mon September 8 - 14	5:50	7:20	Mon. November 3 - 9	6:20	4:30
Mon September 15 - 21	6:10	7:00	Mon. November 10 - 16	6:30	4:20
Mon September 22 - 28	6:15	6:50	Mon. November 17 - 23	6:40	4:15
Mon September 29 - Oct 05	6:30	6:35	Mon. Nov. 24 - 30	6:50	4:10
Mon October 6 - 12	6:40	6:25	Mon. December 1 - 7	7:00	4:10
Mon October 13 - 19	6:50	6:10	Mon. December 8 - 14	7:05	4:05
Mon. October 20 - 26	7:00	5:55	Mon. December 15 - 21	7:10	4:10
Mon Oct 27 - Sat Nov 1	7:15	5:45	Mon. December 22 - 28	7:10	4:15
			Mon. Dec 29 - Jan 4	7:15	4:15
			Mon. January 5 - 11	7:15	4:25
			Mon. January 12 - 18	7:10	4:35
			Mon. January 19 - 25	7:05	4:45